

Psychedelic



About Us

Core Design Gallery is an exclusive boutique art gallery that represents the face of Malaysian contemporary artists and their cutting edge artworks.

With its main philosophy of holding major shows that have critical values and museum qualities, Core Design Gallery aims to create massive awareness on the significance of Malaysian contemporary art through solid art management and important publications.

The gallery is committed to promoting and developing the artists to achieve international standard and global recognition for their quality artworks.

Psychedelic

PROJECT TEAM

Scarlette Lee
Dua Konsultasi
Hawa Basery
Ain Rahman

CATALOGUE DESIGN

Hawa Basery
Ain Rahman
Muhammad Syazwan

PHOTOGRAPHY

Puah Chin Kok
Core Design Workshop

First published in Malaysia in 2021
Core Design Gallery Sdn Bhd
87, Jalan SS15/2A Subang Jaya
47500 Selangor, Malaysia

<http://malaysiacontemporaryart.coredesigngallery.com>

2021 © Core Design Gallery

All rights reserved. No part of this publication may be reproduced or transmitted in any form or by any means, electronic or mechanical, including photocopying, recording, or any other information storage and retrieval system, without prior permission in writing from the publisher.

The years 2020 and 2021 were overcast with the seemingly endless winter of Covid-19. As the world at large has fallen under the dark clouds of separation, anxiety and uncertainty from the pandemic and its subsequent lockdowns, ways to connect through art and culture multiplied. Yet in quickly moving the art world from physical spaces to digital realms we created a sense of hyper connectivity and continuous consumption. Now with the loosening of the MCO restrictions in Malaysia and a return to 'live' events an antidote to this surreal period of time is offered through the group exhibition *Psychedelic*. A presentation of a series of dynamic artworks by Malaysian contemporary artists, this exhibition invites viewers to slow down in the presence of each work and carefully consider it. Thus, by placing the artwork/viewer relationship at its core, *Psychedelic* wonders if we are witnessing the gradual blossoming of a post-pandemic era.

The word *psychedelic* itself is imbibed with connotations of intense, vivid colours, swirling patterns or an expansion of consciousness. Not only do the works on offer at this exhibition build up from recognisable signatures of each exhibited artist, they expand on these signatures to widen what each artistic practice might mean, or

a group exhibition *Psychedelic*

Zena Khan

suggest new modes of viewer engagement. This links closely to the ways in which an appreciation of contemporary art has manifested in Malaysia over the past two years. As we have all been at home, contemplating our physical, personal and emotional spaces, culture has been not only a source of information and inspiration but has brought real joy to the intimate confines of lockdown.

Psychedelic not only hints at the surrealness of the past two years but reminds us these experiences have altered lives, routines and habits. In the 'new normal' as we seek to find new ways to negotiate our everyday lives we are seeing our cities and outdoor spaces through a new lens. This notion of examining our surroundings with fresh eyes has been translated by the artists on show into innovative ways of approaching existing artistic practices. Moments such as these that mark turning points for an artist often result in highly creative landmark artworks. This notion feels apt when studying several of the artworks presented in *Psychedelic*. We see the ways in which each artist on show has spent time reflecting on past signatures, carving out directions as yet uncharted, and reminding us to consistently seek joy.



Close up of Anniketyni Madian's M.A.D.A.H No. 6 & 7

As an exhibition, *Psychedelic* is a creative collaboration between contemporary art gallery, Core Design Gallery and art consultancy, Dua Konsultasi. Both the gallery and consultancy have been at the forefront of the surge in interest for dynamic contemporary Malaysian artworks through their specialised skill sets. Through an understanding of the support, documentation and presentation of art in a manner that strongly resonates with contemporary audiences, the gallery and the consultancy are bringing a fresh take on works by artists who are well established in the local art ecology, including Anniketyni Madian, Fawwaz Sukri, Haafiz Shahimi, Mohd Fairuz Paisan (Pooi) and Nor Tijan as well as a younger generation, including Ain Rahman, Atiqah Khairul Anuar, Firdaus Ismail, Hirzaq Harris, Husin Othman, Nawwar Shukriah Ali, Syafiq Hariz and Syahmi Jamaluddin.

This artist choice extends the idea of refreshing our views subsequent to the pandemic and confined routines we have been encased in for the past two

years. Visually the exhibition does this with stylistic debuts, perhaps most notably Pooi's free-standing three-dimensional sculptures or the introduction of a neon palette in Anniketyni's works. Artists have brought forward past approaches too, in a more prominent manner, such as *The War Vetran I* and *The War Vetran II* where Fawwaz marries conversations on cultural and economic mercantilism by painting American cartoon characters on cardboard boxes. Haafiz takes his self-developed pyrographic print technique forward by moving from jute to metal bases, resulting in delicious candy coloured coats.

Psychedelic moves past simply being an art fair exhibition. It becomes a space for critical and conceptual discourse that acts as a testbed for future directions in Malaysian contemporary art. Perhaps most crucially as Malaysia opens up and needs to seek newfound methods of navigating the post pandemic landscape, *Psychedelic* offers a distinct guide for possibilities in the cultural arena.



Close up of Nawwar Shukriah Ali's Make Yourself and The Idea of Me

From Left to Right:

Strike Stars III, IV

Elastic Fabric, Elastic Threads, Steel Rods
and Acrylic Sheet

III: 42cm (h) x 20cm (w) x 20cm (d)

IV: 40cm (h) x 20cm (w) x 20cm (d)

2021



From Left to Right:

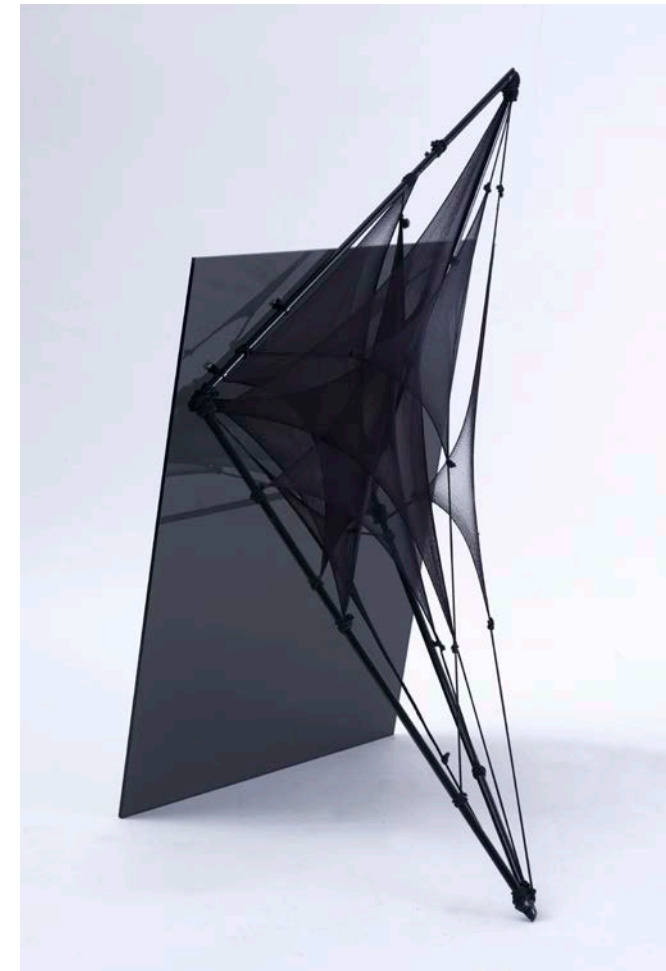
Strike Stars I, II

Elastic Fabric, Elastic Threads, Steel Rods
and Acrylic Sheet

I: 84cm (h) x 46cm (w) x 42cm (d)

II: 70cm (h) x 7cm (w) x 22cm (d)

2021



Anniketyni Madian



M.A.D.A.H No. 6
Metal, Stainless Steel, Epoxy Resin and Wood
122cm (diameter)
2021



M.A.D.A.H No. 7
Epoxy Resin and Mixed Hardwood
122cm (diameter)
2021



Bounded
Oil on Linen
91cm x 76cm
2020

Another Frame, Another Story
Oil on Canvas
25cm x 20cm
2021



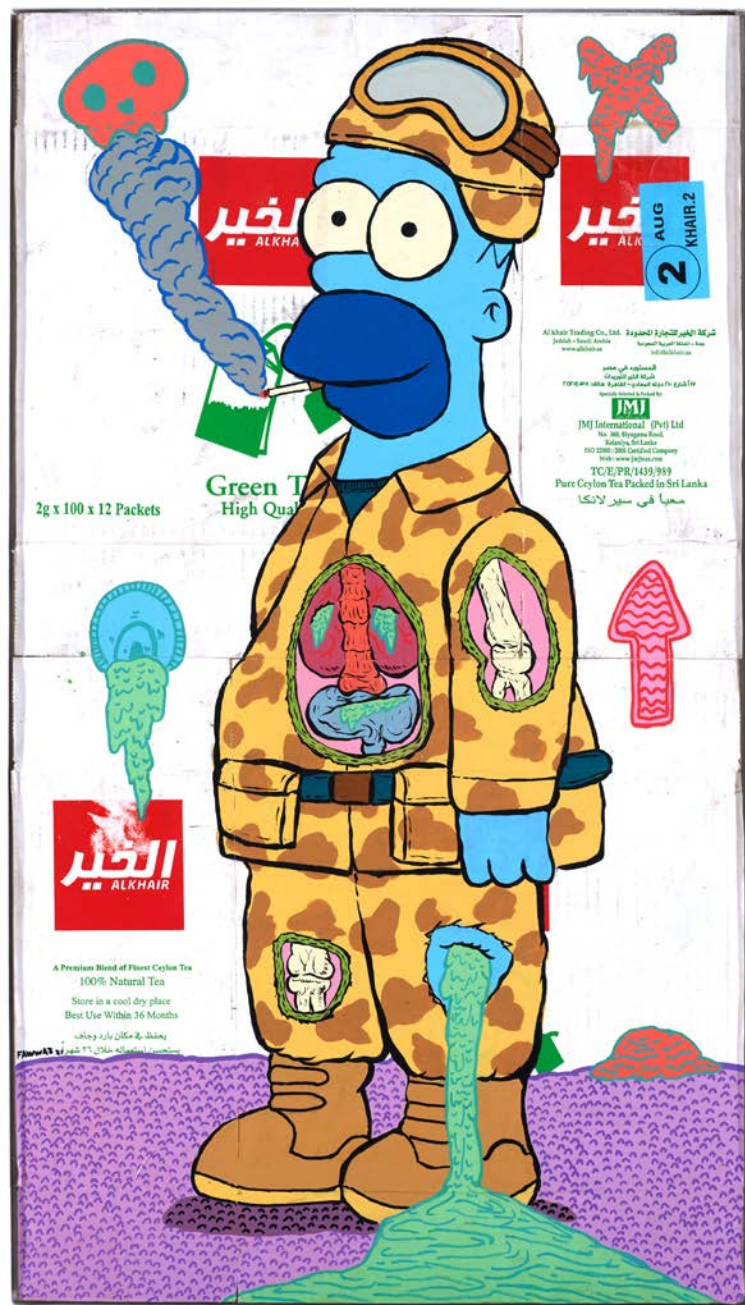




Damsel in Distress
Acrylic on Canvas
156cm x 125cm
2021



Fight For Your Right
Acrylic on Canvas
147cm x 122cm
2021

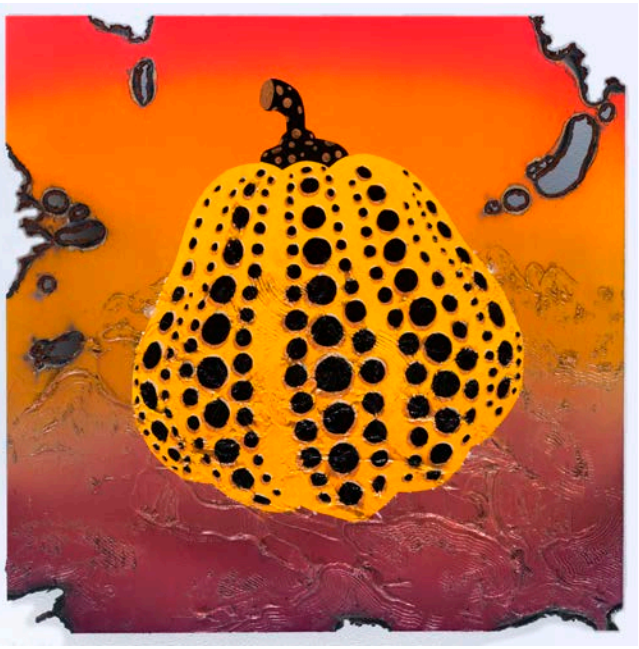


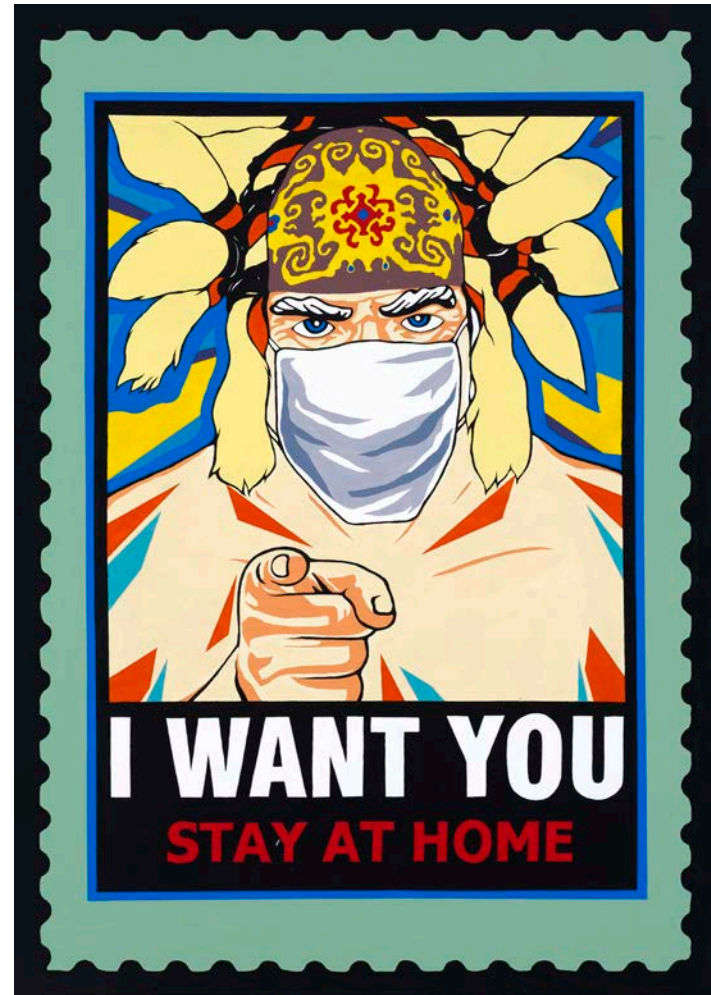
From Left to Right:

The War Veteran I, II
 Acrylic on Canvas
 I: 101cm x 65cm
 II: 104cm x 58cm
 2021

Next Page:

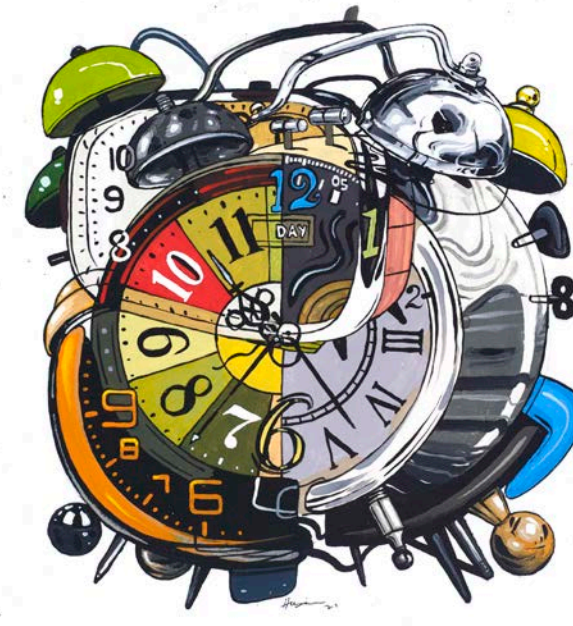
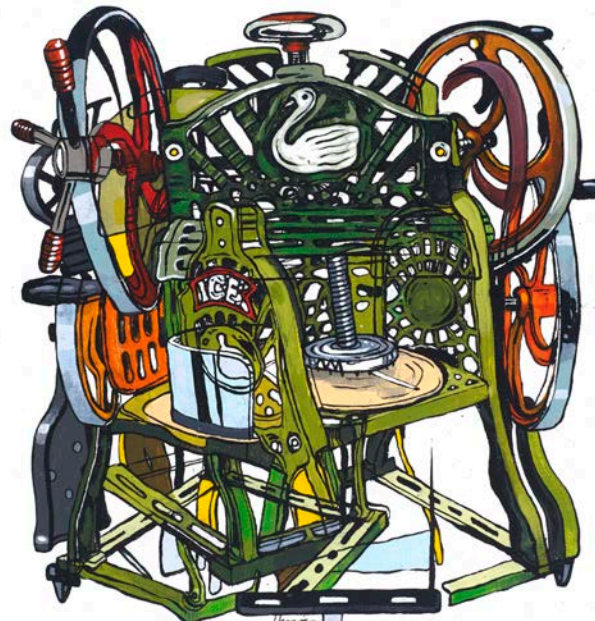
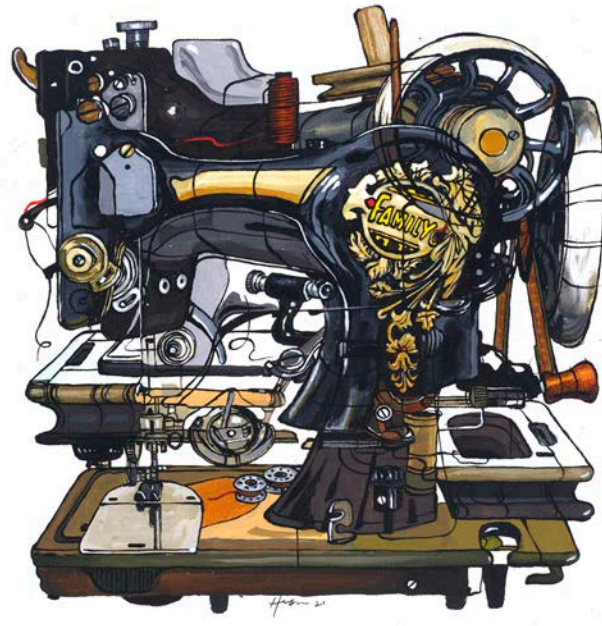
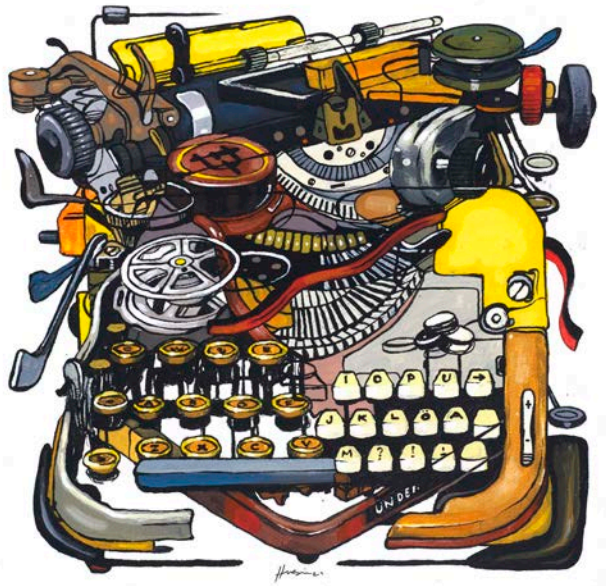
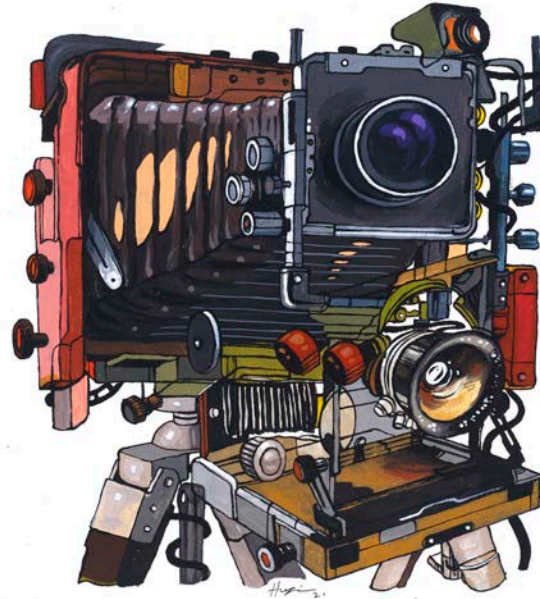
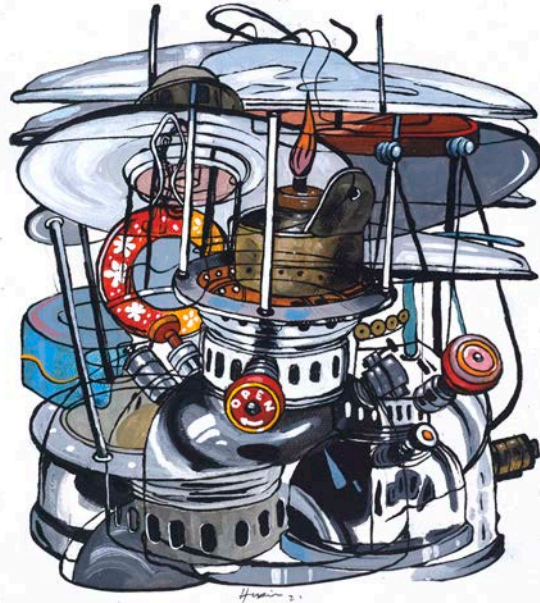
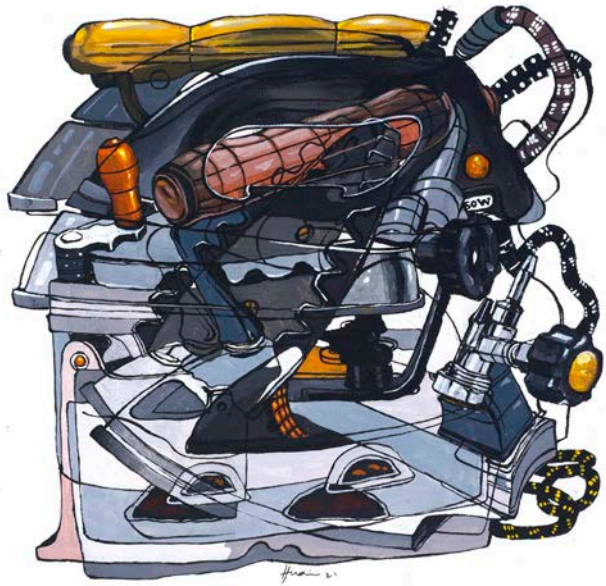
Iconic Series I - X
 Acrylic, Automotive Paint, Spray Paint,
 Rusted Chemical Wash and Plasma
 Cutting on Metal
 46cm x 46cm each (10 Panels)
 2021



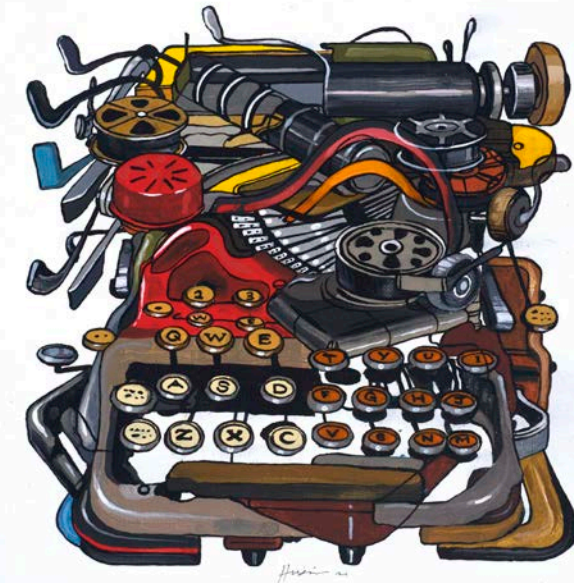
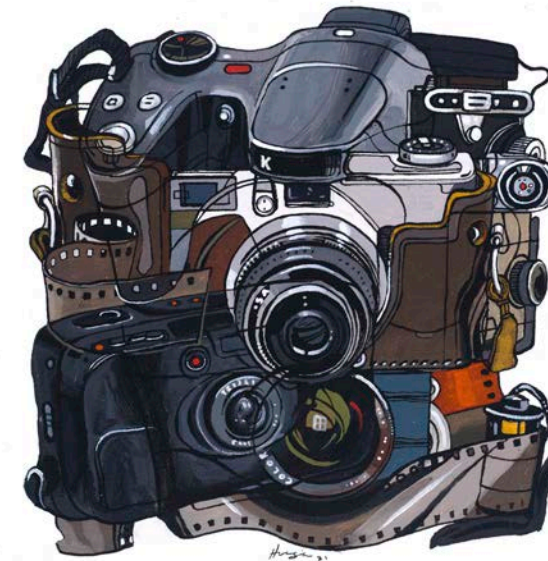
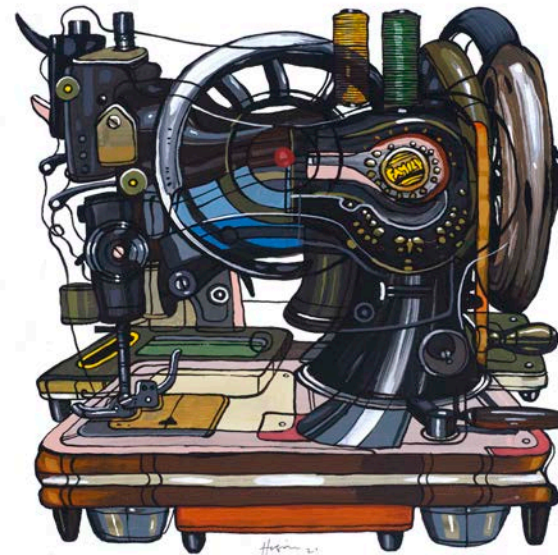
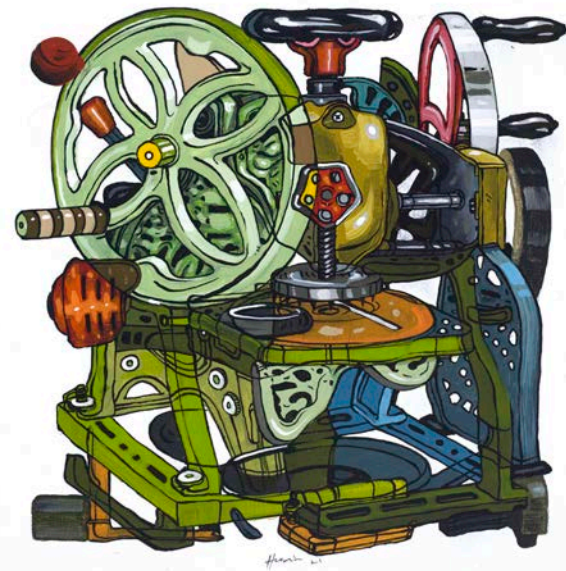
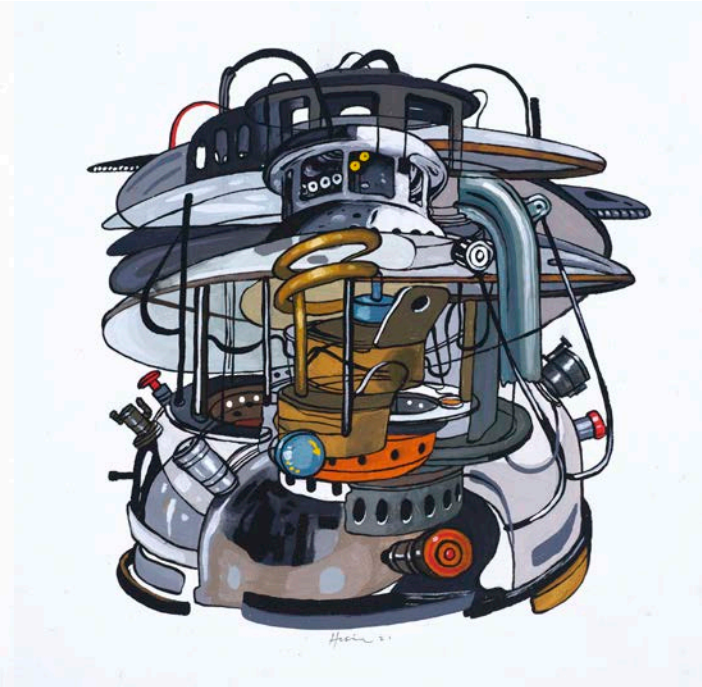


From Left to Right:

S.O.P - I Want You 3 Feet Away, Follow
SOP, Stay At Home, Wash Your Hand,
Wearing Masks
Acrylic on Canvas
110cm x 78cm each (5 Panels)
2021



Vintage Series 1-9
Acrylic on Canvas
30cm x 30cm each (9 Panels)
2021



Vintage Series 10-18
Acrylic on Canvas
30cm x 30cm each (9 Panels)
2021

Mohd Fairuz Paisan (Po Oi)



Sign of Stability - Blue
Fiberglass and Blue Resin
100cm (h) x 50cm (w) x 50cm (d)
2021



Sign of Stability - Red Passion
Fiberglass and Red Resin
100cm (h) x 50cm (w) x 50cm (d)
2021



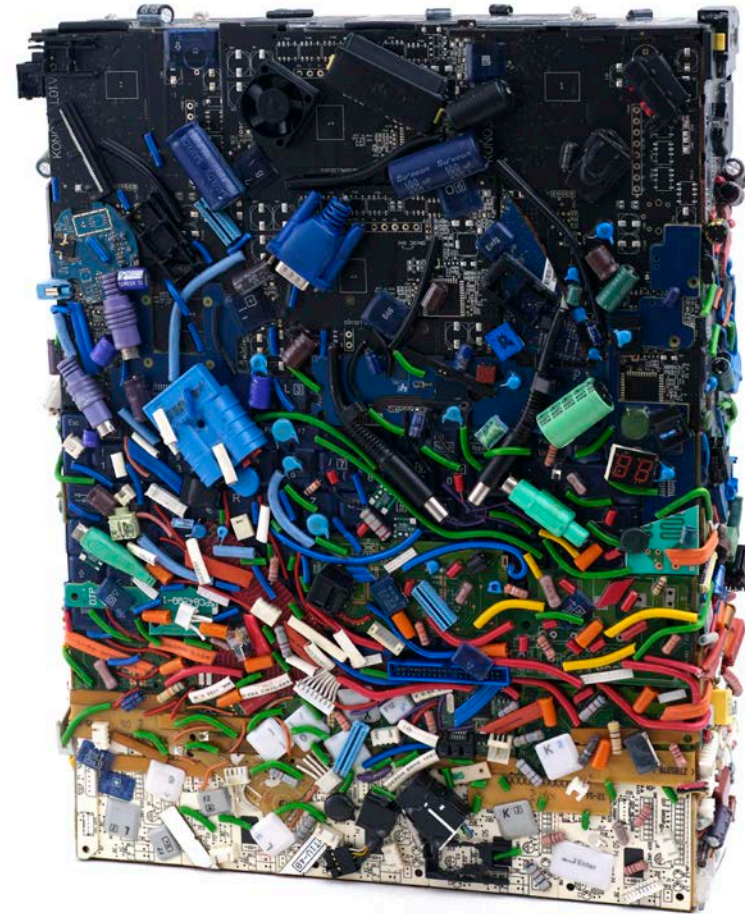
The Idea of Me
Mirror Plexiglass on MDF Board
90cm x 90cm
2021



Make Yourself
Mirror Plexiglass on MDF Board
90cm x 90cm
2021

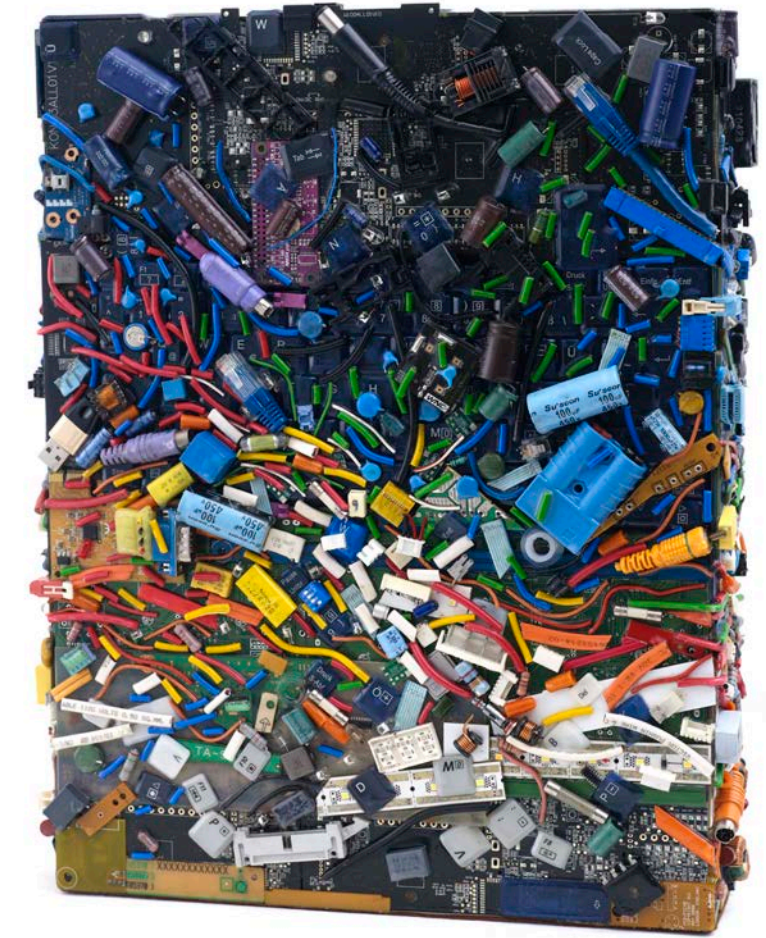


Rosalie
Acrylic and Mirror Plexiglass on Canvas
100cm x 100cm
2021



NATURE IN 360' I
E-Waste on Wood Coated with 2
Layer Epoxy Matte 2k Resin
43cm (h) x 31cm (w) x 8cm (d)
2021

NATURE IN 360' II
E-Waste on Wood Coated with 2
Layer Epoxy Matte 2k Resin
43cm (h) x 31cm (w) x 8cm (d)
2021





The Battles I-V
Acrylic on Canvas
85cm x 85cm each (4 Panels)
2021



Once Upon A Time In Garden I
Acrylic, Silkscreen Ink and
Plexiglass on Canvas
96cm x 65cm
2021



Once Upon A Time In Garden II
Acrylic, Silkscreen Ink and
Plexiglass on Canvas
96cm x 65cm
2021

In collaboration with



DUA
KONSULTASI

Hosted by



CORE
Design Gallery